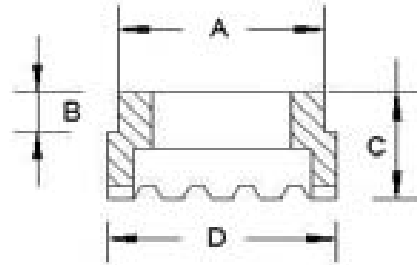
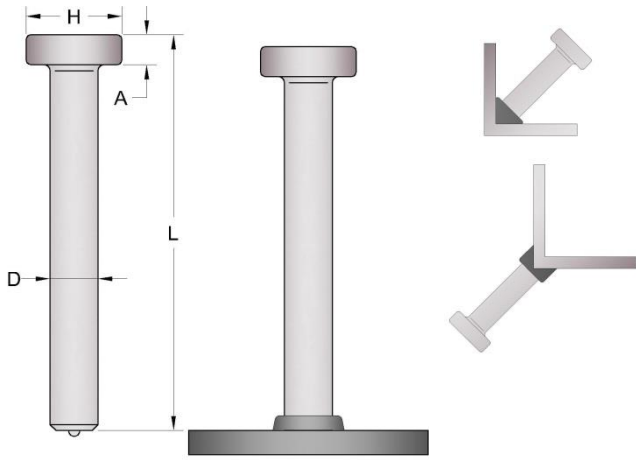


HCA HEADED CONCRETE ANCHOR



| STUD SPECIFICATIONS | | | FERRULE SPECIFICATIONS | | | | |
|---------------------|------|------|------------------------|------|------|------|------|
| D | A | H | Part No. | A | D | B | C |
| 1/4 | .187 | .500 | 14FER | .380 | .454 | .234 | .390 |
| 3/8 | .281 | .750 | 38FER | .505 | .640 | .234 | .390 |

| Description | Part No. | Pieces Box | Pounds Box | Pounds M Pieces | Description | Part No. | Pieces Box | Pounds Box | Pounds M Pieces |
|---------------|----------|------------|------------|-----------------|-------------|----------|------------|------------|-----------------|
| 1/4 x 1-1/8 | CA141 | 2500 | 58 | 23 | 3/8 x 1-3/8 | CA3813 | 800 | 55 | 68 |
| 1/4 x 2-11/16 | CA1421 | 1500 | 65 | 43 | 3/8 x 1-5/8 | CA3815 | 750 | 57 | 75 |
| 1/4 x 3-1/8 | CA143 | 1000 | 51 | 50 | 3/8 x 2-1/8 | CA382 | 600 | 55 | 91 |
| 1/4 x 4-1/8 | CA144 | 1000 | 65 | 64 | 3/8 x 2-5/8 | CA3825 | 500 | 56 | 112 |
| | | | | | 3/8 x 3-1/8 | CA383 | 450 | 54 | 124 |
| | | | | | 3/8 x 4-1/8 | CA384 | 350 | 53 | 151 |
| | | | | | 3/8 x 5-1/8 | CA385 | 300 | 59 | 185 |
| | | | | | 3/8 x 6-1/8 | CA386 | 250 | 55 | 216 |

All Cox Industries Headed Concrete Anchors meet current AWS D1.1 and CSA W59 specifications.

HEADED CONCRETE ANCHORS are designed for welding to flat surfaces or welding to the fillet or on the heel of angles.

FERRULES: All orders for studs include required ferrules for welding. Please specify when ordering what type of ferrule is required for your application.

LENGTH: Length is before weld. Stud diameters (D) 1/2" and under will be approximately 1/8" shorter after weld.

MATERIAL: Low carbon steel, ASTM A29/A108, 1010-1020. Headed Concrete Anchors are also available in weldable stainless steel, type 302 is most common.

MADE TO ORDER LENGTHS AVAILABLE UPON REQUEST

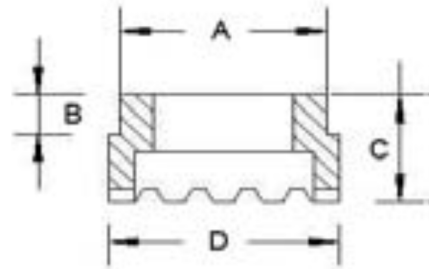
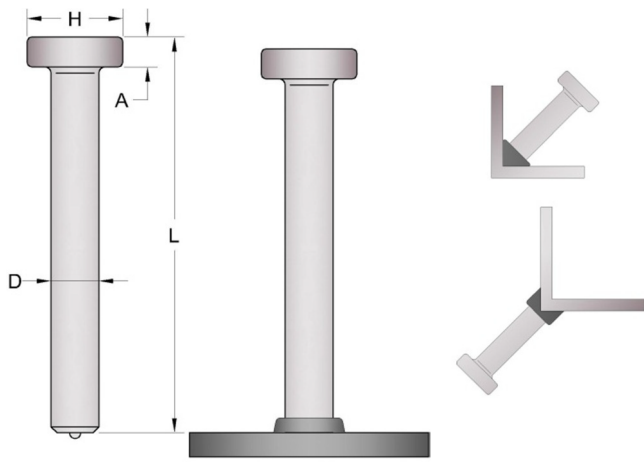
Mechanical Properties Requirements

| | Type A | Type B |
|--------------------------|----------------|----------------|
| Tensile Strength | 61,000 psi min | 65,000 psi min |
| Yield Strength | 49,000 psi min | 51,000 psi min |
| Elongation (% in 2") | 17% min | 20% min |
| Elongation (% in 5x dia) | 14% min | 15% min |
| Reduction of Area | 50% min | 50% min |

Type A studs shall be general purpose of any type and size used for purposes other than shear transfer in composite beam design and construction.

Type B studs shall be studs that are headed, bent, or of other configuration in 3/8" [10 mm], 1/2" [12 mm], 5/8" [16 mm], 3/4" [20 mm], 7/8" [22 mm], and 1" [25 mm] diameter that are used as an essential component in composite beam design and concrete anchorage design.

HCA HEADED CONCRETE ANCHOR



| STUD SPECIFICATIONS | | | FERRULE SPECIFICATIONS | | | | |
|---------------------|------|-------|------------------------|------|-------|------|------|
| D | A | H | Part No. | A | D | B | C |
| 1/2 | .281 | 1.000 | 12FER | .650 | .795 | .250 | .438 |
| 5/8 | .312 | 1.250 | 58FER | .785 | 1.030 | .328 | .516 |

| Description | Part No. | Pieces Box | Pounds Box | Pounds M Pieces | Description | Part No. | Pieces Box | Pounds Box | Pounds M Pieces |
|--------------|----------|------------|------------|-----------------|---------------|----------|------------|------------|-----------------|
| 1/2 x 1-1/8 | CA1211 | 500 | 58 | 114 | 5/8 x 1-7/16 | CA5817 | 275 | 58 | 208 |
| 1/2 x 1-5/8 | CA1215 | 400 | 53 | 130 | 5/8 x 2-11/16 | CA5821 | 175 | 55 | 319 |
| 1/2 x 2-1/8 | CA122 | 350 | 59 | 168 | 5/8 x 3-3/16 | CA583 | 150 | 55 | 363 |
| 1/2 x 2-5/8 | CA1225 | 300 | 60 | 198 | 5/8 x 4-3/16 | CA584 | 125 | 57 | 444 |
| 1/2x 3-1/8 | CA1235 | 250 | 57 | 225 | 5/8 x 5-3/16 | CA585 | 100 | 53 | 528 |
| 1/2 x 3-5/8 | CA1235 | 225 | 56 | 246 | 5/8 x 6-3/16 | CA586 | 100 | 61 | 604 |
| 1/2 x 4-1/8 | CA124 | 200 | 57 | 280 | 5/8 x 6-9/16 | CA5869 | 85 | 55 | 646 |
| 1/2 x 5-5/16 | CA1255 | 150 | 53 | 340 | 5/8 x 8-3/16 | CA588 | 75 | 59 | 781 |
| 1/2 x 6-1/8 | CA126 | 150 | 59 | 393 | 5/8 x 10-3/16 | CA5810 | 50 | 48 | 946 |
| 1/2 x 8-1/8 | CA128 | 100 | 50 | 495 | 5/8 x 12-3/16 | CA5812 | 50 | 57 | 1120 |
| 1/2 x 10-1/8 | CA1210 | 90 | 54 | 680 | | | | | |
| 1/2 x 12-1/8 | CA1212 | 50 | 37 | 728 | | | | | |

HEADED CONCRETE ANCHORS are designed for welding to flat surfaces or welding to the fillet or on the heel of angles.

FERRULES: All orders for studs include required ferrules for welding. Please specify when ordering what type of ferrule is required for your application.

LENGTH: Length is before weld. Stud diameters (D) 1/2" and under will be approximately 1/8" shorter after weld.

MATERIAL: Low carbon steel, ASTM A29/A108, 1010-1020. Headed Concrete Anchors are also available in weldable stainless steel, type 302 is most common.

MADE TO ORDER LENGTHS AVAILABLE UPON REQUEST

All Cox Industries Headed Concrete Anchors meet current AWS D1.1 and CSA W59 specifications.

Mechanical Properties Requirements

| | Type A | Type B |
|--------------------------|----------------|----------------|
| Tensile Strength | 61,000 psi min | 65,000 psi min |
| Yield Strength | 49,000 psi min | 51,000 psi min |
| Elongation (% in 2") | 17% min | 20% min |
| Elongation (% in 5x dia) | 14% min | 15% min |
| Reduction of Area | 50% min | 50% min |

Type A studs shall be general purpose of any type and size used for purposes other than shear transfer in composite beam design and construction.

Type B studs shall be studs that are headed, bent, or of other configuration in 3/8" [10 mm], 1/2" [12 mm], 5/8" [16 mm], 3/4" [20 mm], 7/8" [22 mm], and 1" [25 mm] diameter that are used as an essential component in composite beam design and concrete anchorage design.