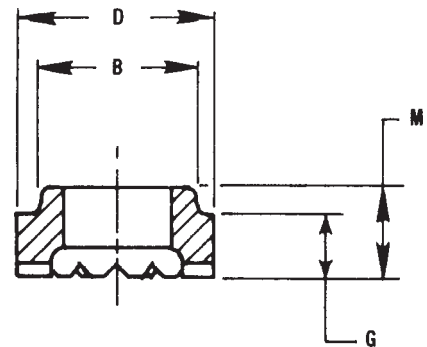
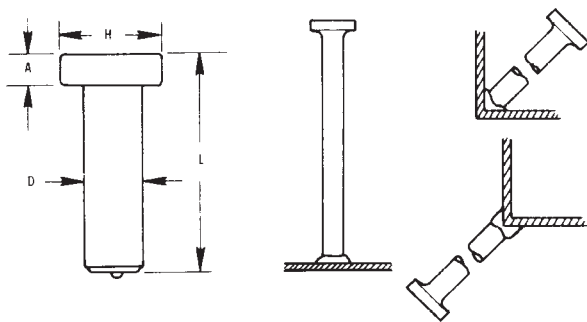


# SC SHEAR CONNECTOR STUDS



STUD SPECIFICATIONS			FERRULE SPECIFICATIONS				
D	A	H	PART NO.	B	D	G	M
3/4	3/8	1-1/4	34FER	1.030	1.215	.469	.656
			34TFER	1.210	1.338	.400	.587
7/8	3/8	1-3/8	78FER	1.210	1.408	.545	.732
			78TFER				

Description	Part No.	Pieces	Pounds	Pounds	Description	Part No.	Pieces	Pounds	Pounds
		Box	Box	M Pieces			Box	Box	M Pieces
3/4 X 3-3/16	SC343	125	60	480	3/4 X 6-3/16	SC346	60	50	850
3/4 X 3-3/8	SC3433	125	62	513	3/4 X 7-3/16	SC347	60	59	1020
3/4 X 3-7/8	SC3437	100	58	568	3/4 X 8-3/16	SC348	50	56	1112
3/4 X 4-3/16	SC344	100	62	600	7/8 X 3-11/16	SC7831	100	73	726
3/4 X 4-3/8	SC3443	100	62	625	7/8 X 4-3/16	SC784	100	81	810
3/4 X 4-7/8	SC3447	75	51	707	7/8 X 5-3/16	SC785	75	75	1000
3/4 X 5-3/16	SC345	60	44	740	7/8 X 6-3/16	SC786	50	57	1140
3/4 X 5-3/8	SC3453	60	45	775	7/8 X 7-3/16	SC787	45	59	1300
3/4 X 5-7/8	SC3457	60	49	800	7/8 X 8-3/16	SC788	40	59	1510

COX INDUSTRIES TYPE SC CONNECTOR STUDS are designed to effectively tie the concrete to the steel beams and to resist shear loadings between the concrete slab and steel beam in composite construction. All orders for studs include required ferrules.

LENGTH: Length is before weld. Studs will be approximately 3/16" shorter after welding. Lengths for shear connector studs are generally set by governing specifications.

MATERIAL: Low Carbon Steel.

MECHANICAL PROPERTIES: ( as cold drawn)  
 Tensile: ..... 60,000 psi min.  
 Reduction in Area: ..... 50% min.

All COX INDUSTRIES shear connector studs meet AWS specifications. Test reports available on request.

STAINLESS STEELS: COX INDUSTRIES studs are also available in weldable stainless steel. Type 304 is the most commonly used. Other grades of stainless steel (except Type 303) available when required.

FLUX: COX INDUSTRIES Shear Connector Studs are solid fluxed.



*Cox Industries*